



— CREATIVE —  
**ARTS AND CRAFTS  
COMPETITION**

CS

*Calgary Stampede*



**INQUIRIES:**

artsncraftscalgary@gmail.com

**REGISTER BY:**

Thursday, June 21, 2018

**ONLINE:**

[westernshowcase.com/  
creativeartsandcrafts.html](http://westernshowcase.com/creativeartsandcrafts.html)

**MAIL:**

Calgary Stampede  
Creative Arts & Crafts Competition,  
Western Showcase  
Box 1060, Station M,  
Calgary, AB T2P 2K8  
Attn: James Radke

Cover Art by: Susan Hertz

## HISTORY

The Creative Arts and Crafts Committee has its origins in the Women's World displays of the 1970s.

The intent was to commemorate the original Exhibition component of what was then the Calgary Exhibition and Stampede. The Creative Arts and Crafts competition was conceived to ensure the talent, craftsmanship and artistry of amateur participants in early Stampedes would be preserved and advanced.

Today, the committee is composed of twenty committee volunteers who work throughout the year to ensure a high quality competition. It also relies on qualified judges and the work of nearly two hundred other volunteers who come together to create a Western Oasis at the Calgary Stampede.

## CHAIR'S COMMENTS

Welcome to the 2018 Competition for amateur artisans of handmade items. All competitors receive feedback from qualified judges on their entries and are eligible for ribbons and prizes. Entries will be displayed in the Western Oasis and are viewed by more than 400,000 visitors during the Calgary Stampede.

The 2018 Creative Arts and Crafts Book is your reference guide to the creative contests. There are 3 ways to enter: online, by mail and in person. Reading the rules and regulations will ensure your entry meets all the section and display criteria.

Make sure to stop in for a visit with the Guilds in the Cabin and check out the Maker Market, now in its second year.

Audrey Buchanan  
CAC Chair



## MAKER MARKET INFORMATION

The MAKER MARKET brings artisans together to showcase and sell their upscale, wearable and decorative goods. Our juried Market is fresh every three to four days with new vendors taking part. Think of it as three separate shows over eleven days. And with 600,000 people moving through the BMO Centre, it's a one of a kind opportunity to be a part of our made-local handcrafted culture with national and international exposure. DISCOVER HANDMADE right here at the Calgary Stampede.



## GUILDS

Guilds were originally created in Medieval England when craftsmen gathered to aid each other, protect themselves and set standards for their crafts.

Our modern day guilds have evolved from this beginning and we can see remnants of the original purpose in them. Today some of their goals are, to teach and

develop the craft, to raise awareness and promote interest in their craft, support each other, share ideas and of course enjoy friendship.

We have many guilds in Calgary and surrounding areas which are comprised of people who share a love of the same type of craftsmanship or artistry. Indeed, a number of guild members are active participants in the Creative Arts and Crafts Competition every year at the Calgary Stampede.

The Creative Arts and Crafts Committee hosts different guilds in our cabin in the Western Oasis during the Calgary Stampede. The guild members share their enthusiasm and skills during their visit and are happy to answer any questions about their craft and guild.

For those who are interested in joining a guild, many of the guilds have websites and facebook pages.

Please come out and visit the Guilds, you might just find a new passion in life!

## GINA BROWN AWARD

Gina Brown was well-known in the Calgary craft community. She was involved with the Calgary Stampede Handicrafts as a judge in the early 1960s and later joined the Handicraft Committee in the 1980s. She served as a volunteer on the Committee until her passing in August 1996. Gina will always be remembered for her boundless energy and her vast technical expertise. The Creative Arts & Crafts Committee thanks Gina Brown's family for continuing to make this award possible in loving memory of Gina.

The Gina Brown Needle Arts Award is open to a competitor entering the Knit and Crochet or Needlework and Stitchery Sections.

The winner is chosen by members of the Creative Arts and Crafts Committee and is awarded a commemorative piece.

### GINA BROWN MEMORIAL AWARD

2017 won by Jocelyne Kurc



# RIBBONS AND PRIZES

## COMPETITIVE SECTIONS

The Creative Arts and Crafts Committee invites individual entries for competition from adults (18+) and juniors (17 & under).

### ADULT SECTION

Ribbons may be given to the first, second and third place winners of each Class. The “Class” is defined as the category within a Section. For example, “9000 – Hand Quilted Pieced” is a Class within the Quilting Section.

A single entry in a Class is not guaranteed a ribbon. There is no cash prize for Class winners. The first place winners of each Class will then be judged together on merit and workmanship to determine first, second and third place for the Section. “Section” is defined as all of the classes in an area. For example, “Quilting” is a Section.

Section winners are awarded a monetary prize:

The First Place Section winner will receive a section ribbon and \$175.

The Second Place Section winner will receive a section ribbon and \$150.

The Third Place Section winner will receive a section ribbon and \$125.

We reserve the right to award an honourable mention in a Section. An Honourable Mention placing has no cash value.

### JUNIOR SECTION

Ribbons may be awarded to the First, Second and Third place winners of each Class. There are no cash prizes for the winners of a Class.

The first place winners of each class will then be judged together on merit and workmanship to determine first, second and third place for the Section.

Junior Section winners are awarded a monetary prize.

The First Place Section winner will receive a section ribbon and \$175.

The Second Place Section winner will receive a section ribbon and \$150.

The Third Place Section winner will receive a section ribbon and \$125.

# WALL OF CHAMPIONS

The Creative Arts and Crafts Committee of the Western Showcase is pleased to present the “Wall of Champions” in honour of outstanding work done by participants.

The Wall of Champions will be open to any participant who receives a first in the same Section for four years. The years do not have to be consecutive.

The year after their fourth section win, the participant will be inducted into the Creative Arts and Crafts “Wall of Champions”. A championship ribbon and trophy will be awarded and their picture taken. This picture will hang yearly on the “Wall of Champions” beginning the year after their fourth win.

Once inducted into the Wall of Champions a participant will no longer be eligible to enter that section. Instead, they will receive an invitation to enter one article related to that section. This entry will be subject to all current rules and regulations.

The Creative Arts and Crafts Committee would like to congratulate the section winners of the Calgary Stampede 2011 to 2017.



## 2018 CHARITY – ROWAN HOUSE

Artisans are welcome to donate new useful handcrafted articles for adults and children such as quilts, afghans, sweaters or household items for charity. These items may be displayed but will not be judged. There is no entry fee for charitable donation items.

Our 2018 charity is Rowan House Emergency Shelter, which provides shelter and support to at-risk women and their families. Your lovingly handcrafted donations are greatly appreciated by the recipients.

The Creative Arts and Crafts Committee is proud to support local charitable organizations with your donations. We encourage you to enter a special article to donate to this worthy cause. Although we appreciate your offer, we are unable to accept any framed pictures or calligraphy.

### SECTION ENTRY FOR 2018 CHARITY

9999 - Charity Section

Entry fees have been waived in this Section. You may enter up to five items into the Charity Section.



## 2018 CREATIVE ARTS AND CRAFTS COMPETITION SECTIONS

RULES AND REGULATIONS LOCATED ON PAGE 19





# CAKE DECORATING AND SUGAR ART

Cake decorating started during the 17th century in Europe. It is a sugar art using icing or frosting and other edible decorative items to make plain cakes visually interesting. Cakes can be molded & sculpted to resemble three dimensional objects, places or people.

1000 Tier cakes

1100 Novelty cakes

1200 Sugar Art



RULES AND REGULATIONS

Page 19

# DECORATIVE HANDMADE ART

Decorative Handmade Art describes objects that are created by hand for a purely decorative use.

2000 Paper

2100 Metal

2200 Fibre, Fabric, Leather

2300 Ceramics, Glass and Pottery

2400 Rugs

2500 Wood

2600 Toys

2700 Beading

2800 Weaving



RULES AND REGULATIONS

Page 19

## DRAWING

Drawing is a visual art using various drawing instruments to mark paper or another two dimensional medium such as cardboard, leather, canvas or board. Calligraphy is a drawing art, using pen or brush to produce decorative handwriting or lettering.

3000 Pen, ink or scratchboard

3100 Charcoal, graphite or pencil

3200 Pencil crayons, wax crayons or pastels

3300 Calligraphy



RULES AND REGULATIONS

Page 19

## FUNCTIONAL HANDMADE ART

Functional Handmade Art describes objects that are created and crafted by hand or by using only simple tools for a specific purpose/use.

4000 Paper

4100 Metal

4200 Fibre, Fabric, Leather

4300 Ceramics, Glass and Pottery

4400 Rugs

4500 Wood

4600 Toys

4700 Wearable items

4800 Weaving



RULES AND REGULATIONS

Page 19

## JUNIORS

Open to anyone 12 to 17 years of age.

Any 12 year olds wishing to enter online must have the form filled out by their parents or guardians. Alternately, they may print the form and mail it to the address listed in the book.

Please ensure that the participant's age is noted on the entry form. If there is enough competition in a class, the class will be broken down into categories according to age. The Junior Section is to encourage young artisans; therefore, no group entries will be accepted.

Please refer to each section **RULES AND REGULATIONS** on page 19 for submission guidelines, including size restrictions and display requirements.

5000 Decorative Handmade Art

5100 Functional Handmade Art

5200 Quilts

5300 Knit and crochet

5400 Needlework and stitchery

5500 Painting

5600 Drawing

5700 Cake and Sugar art



**RULES AND REGULATIONS**

Page 19

## KNIT AND CROCHET

Knitting is a method of creating a textile or fabric by manipulating yarn using two or more needles. Needle sizes and stitch styles are used to achieve knitted fabrics with diverse properties.

Crocheting is a method of creating fabric by interlocking loops of yarn, thread or strands of other materials using a hook. Crochet is a French word meaning a small hook.

The difference between the two, other than the use of needles versus a hook, is that in crochet each stitch is completed before proceeding to the next, while knitting keeps a number of stitches open at one time.

6000 Knitted lace - Wearable item

6050 Knitted lace - Home décor

6100 Textured stitches -Wearable item

6150 Textured stitches - Home décor

6200 Fair isle or intarsia - Wearable item

6250 Fair isle or intarsia - Home décor

### **CROCHET OR TATTING**

6300 Wearable item

6350 Home décor



**RULES AND REGULATIONS**

Page 19



# NEEDLEWORK AND STITCHERY

Needlework is the art of decorative sewing or embroidery using different needle types and threads. Needlepoint was first developed in 1869, and is counted thread embroidery where yarn is stitched through open weave canvas. (Cross-stitch is the oldest form of embroidery, using X-shaped stitches in a tiled raster-like pattern.)

7000 Cross Stitch

7100 Needlepoint / Petit Point

7200 Embroidery

7300 Heirloom sewn garment

7400 Wearable item



RULES AND REGULATIONS

Page 19

# PAINTING

Painting is an art form that spans all cultures and we find examples of it from prehistoric times through to the present. Water colour painting is a method using paints made of pigments suspended in a water based solution. Oil painting uses paints made of pigments suspended in various types of oils as the binder.

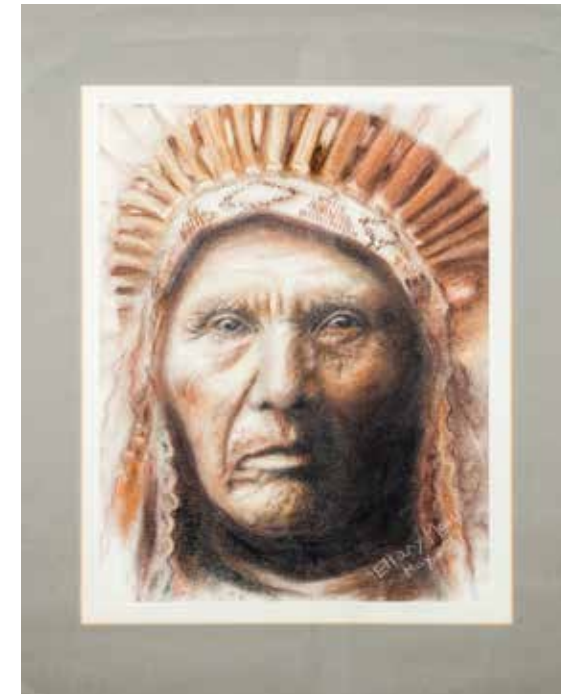
8000 Oil

8100 Acrylic

8200 Watercolour

8300 Pastel

8400 Painted Home Decor - not canvas or paper



RULES AND REGULATIONS

Page 19

# QUILTS

Quilts have three layers: a pieced top, a batting in the middle and a backing. Quilting is the process of sewing the three layers together using continuous stitching or evenly spaced knots.

Modern quilts are defined as those that include the use of bold colours and prints, high contrast and graphic areas of solid colour, improvisational piecing, minimalism, expansive negative space and alternate grid work.

## HAND QUILTED

9000 Hand pieced and/or hand quilted

## MACHINE QUILTED – TRADITIONAL QUILTS

9100 Home décor and Accessories

9200 Appliquéd – pieced and quilted by the entrant. Judged on piecing and quilting.

9250 Appliquéd – pieced by the entrant; quilted by a second person. Judged on piecing only.

9300 Paper-pieced – pieced and quilted by entrant. Judged for both piecing and quilting.

9350 Paper-pieced - pieced by the entrant, quilted by a second person. Judged on piecing only.

9400 Pieced – pieced and quilted by the entrant. Judged on piecing and quilting.

9450 Pieced- pieced by the entrant; quilted by a second person. Judged for piecing only.

9500 Machine Quilted - quilting. Judged on quilting only and must be entered by the quilter.

## ART QUILTS

9600 Art Quilts – representational or abstract.

## MODERN QUILTS

9700 Modern Quilts – pieced and quilted by the entrant. Judged on piecing and quilting.

9750 Modern Quilts– pieced by the entrant, quilted by a second person. Judged on piecing only.



## RULES AND REGULATIONS

Page 19

# ALBERTA WILD ROSE

## 2018 CREATIVE ARTS AND CRAFTS THEME

The Theme Section recognizes and celebrates Alberta's flower: the Alberta Wild Rose. Entries should depict the Alberta Wild Rose as a major theme and can be in any medium or format as described in the Creative Arts and Crafts Committee Sections.

Items must conform to the size and formatting rules of the appropriate section as though they would be entered there (e.g. a cake must follow the cake submission guidelines). Rules and Regulations Page 19

This themed class will be a People's Choice award. We will be asking the public to vote on their favorite item. We will then award a section ribbon and cash prize for first, second and third based on the number of votes received.

2018 Alberta Wild Rose - Junior and Adult

## CONGRATULATIONS TO COURTNEY HUNT

### 2017 MAPLE LEAF THEME WINNER



# RULES AND REGULATIONS

1. **ALL ENTRIES FOR COMPETITION MUST BE REGISTERED BY** June 21, 2018. Entries can be registered online at [www.westernshowcase.com](http://www.westernshowcase.com) or by mail and must be accompanied by a photo or a description of the entry. The Creative Arts and Crafts Committee is hereinafter called 'The Committee'.
2. Entry fees for the Adult and Junior Competition are \$15 per entry and may be paid by:
  - credit card, if registering online. Confirmation receipt sent via email.
  - cheque, if mailed in advance, made out to Calgary Stampede
  - cash or cheque at Take-In.

Please note there is no entry fee for the Charity Section.

3. Each competitor in the Adult and Junior Section is limited to TWO entries. All items should be completed within 12 months prior to Stampede 2018.
4. **TAKE-IN OF ENTRIES** before Stampede - Wednesday, June 27, 2018 (10:00 am to 7:00 pm) in Hall E of the BMO Centre. In order to avoid parking charges, present the parking lot coupon to the gate attendant located off of 12th Avenue SE at time of entry. The parking coupon is available online at [westernshowcase.com](http://westernshowcase.com).

Note: all other lots have a parking fee. The Committee is not able to stamp tickets for a refund.

5. **PICK-UP OF ARTICLES** at end of Stampede - Tuesday, July 17, 2018 (10:00 am to 7:00 pm) in Hall E of the BMO Centre. In order to avoid parking charges, present the parking lot coupon to the gate attendant located off of 12th Avenue SE at time of entry. The parking coupon is available online at [westernshowcase.com](http://westernshowcase.com).

Entries will only be returned to the owner unless the owner designates another person in writing. This authorization and the claim ticket provided during Take-in must be presented by the designated person. All entries will be signed in and out by the committee. No entries can be removed until the Stampede is over. Any entries not picked up by 7:00 pm July 17, 2018 will be donated to our designated charity. The Committee is unable to accept or return entries by mail.

6. Insurance is the responsibility of the participant. Under no circumstance shall the Calgary Stampede, its Directors, officers, employees or volunteers be held responsible for loss, damage or for articles not picked up. Every precaution is taken by the Committee to protect all entries when handling and displaying. While in our possession, articles are monitored by security personnel provided by the Calgary Stampede.

### 7. DISPLAY REQUIREMENTS - ALL ENTRIES

All entries will remain on display for the entire period of the Calgary Stampede.

Label "front" and "top" of entries so they can be displayed correctly.

Notes detailing construction and any other pertinent information (i.e. materials used) should be on a 3"x5" card and accompany entry. Do not add your



name to this card. Please note that this card will not be displayed but is intended to help the judges in evaluation.

#### **CAKES:**

**NO REAL CAKES WILL BE ACCEPTED.** All items in the cake categories must be made as if using a real cake.

All colourings used must be edible. Decorations should be edible.

Points will be deducted for store bought items, e.g. plastic ornaments, paper leaves, dried or silk flowers, ribbon, cake toppers, etc.

Wires on sugar flower sprays should not be inserted into the cake; use plastic picks.

Maximum height of 30".

**BOARDS** must be 1/4" stable board and must have a 'foot' so they do not sit flush on the table. Maximum board width 16"x16".

Support pillars and stands for sprays, etc. are allowed. Cakes with unbalanced or wobbly tiers will not be displayed.

Sculpted cakes must be able to be recreated with at least 50% real cake.

Please note: Chocolate, chocolate melts or butter cream will NOT be accepted. Chocolate fondant is acceptable.

Notes detailing construction of entry should be on a 3"x5" card and accompany entry. Do not add your name to this card. Please note that this card will not be displayed but is intended to help the judges evaluate the cake.

#### **DRAWING AND PAINTING:**

All framed items will be displayed on pegboard walls. Therefore, they must be equipped for hanging as follows:

With picture wire for hanging.

The wire attached with screw eyes on wooden frames or proper d-rings on metal frames. Saw tooth hangers will not be accepted.

Finished size of picture including frame must not exceed 120" perimeter.

Notes detailing construction and any other pertinent information (i.e. materials used) should be on a 3"x5" card and accompany entry. Do not add your name to this card. Please note that this card will not be displayed but is intended to help the judges in evaluation.

#### **FUNCTIONAL AND DECORATIVE HANDMADE ART:**

Entries must:

Fit within a depth of 22".

Not weigh more than 20 lbs.

Not be taller than 5 feet.

Framed entries must meet all framed requirements.

Notes detailing construction and any other pertinent information (i.e. materials used) should be on a 3"x5" card and accompany entry. Do not add your name to this card. Please note that this card will not be displayed but is intended to help the judges in evaluation.

#### **JUNIORS:**

Please refer to each section rules and regulations for submission guidelines, including size restrictions and display requirements. Notes detailing construction and any other pertinent information (ie, materials used) should be on a 3"x5" card and accompany entry. Do not add your name to this card. Please note that this card will not be displayed but is intended to help the judges in evaluation.

#### **NEEDLEPOINT AND STITCHERY:**

All framed items will be displayed on pegboard walls. Therefore, these items must be equipped for hanging as follows:

With picture wire for hanging.

The wire attached with screw eyes on wooden frames or proper d-rings on metal frames. Saw tooth hangers will not be accepted.

Finished size of picture including frame must not exceed 120" perimeter.

All articles must be sewn and may include a variety of embellishing techniques.

No quilted clothing will be accepted in this section.

Christening sets must be limited to two articles (e.g. gown and bonnet).

Notes detailing construction and any other pertinent information (i.e. materials used) should be on a 3"x5" card and accompany entry. Do not add your name to this card. Please note that this card will not be displayed but is intended to help the judges in evaluation.

#### **QUILTS:**

All quilts must have a minimum 4" sleeve opening, securely sewn to the quilt (for display purposes). The sleeve should be secured at both the top and the bottom of the sleeve to ensure the quilt hangs properly. Any quilts that do not have sleeves OR quilts with pinned-on sleeves will not be accepted. Accessories do not need a sleeve.

Names of the piecer and the quilter (if they are two different people) must be stated on each entry.

Include the size of your quilt (width and height) to assist us in designing the layout of the quilt display. We encourage you to include this information on your application.

Cover any quilt labels or signatures on the quilt, prior to submission.

Be aware that safety pins are used for display purposes.

Modern quilts are defined as those that include the use of bold colors and prints, high contrast and graphic areas of solid color, improvising piecing, minimalism expansive negative space and alternate grid work.

Notes detailing construction and any other pertinent information (i.e. materials used) should be on a 3"x5" card and accompany entry. Do not add your name to this card. Please note that this card will not be displayed but is intended to help the judges in evaluation.

**PLEASE NOTE:**

If you would like your quilt to be judged on both piecing and quilting when either pieced or quilted by a second person, both names need to appear on the entry as a dual entry with the owner listed first, the other person listed second. Only one ribbon and cash prize will be awarded. Permission to appear in the show should be granted by the non-owner.

Group quilts must enter contact person's name and then back slash the group's name or words "group quilt". E.g. Jane Doe/ Happy Quilters' Guild

8. The Committee and judges reserve the right to accept or reject entries based on condition, quality and suitability for exhibit. We further reserve the right to not display entries depending on space availability and display dimensions.

Specifically, the Committee will **not** accept any entry that:

is not suitably equipped for display (e.g. framed items, quilts)

requires electrical, mechanical or battery operated devices

is deemed too fragile to be displayed

is deemed too large to be displayed

is dirty or damaged or wet

falls beyond the 12 month competition criteria

9. The Committee and judges reserve the right to move entries to another class as appropriate.

10. The Committee engages external individuals to judge the entries before they are displayed. These judges are acknowledged experts and/or professionals in the arts and crafts they are judging. The identity of the judges will remain confidential.

11. Original design will be given extra consideration in the judging, but quality must be maintained. "Original" means that the concept, design and execution are the participant's own. Modifications to commercial designs, patterns or kits are not "originals" but are accepted in the competition.

12. All decisions of the judges are final. An article is judged on its individual merit and will be ranked as the judges deem fit. A single entry in a class is not guaranteed a ribbon. Judges follow the rules of judging established by the Committee.

13. No information or signs will be displayed with the entry. While you can provide this information for the judges, the Committee is not able to include it as part of the display.

14. Anyone who deliberately tries to deceive the Committee in regard to ownership of an entered piece or anyone who purchases or "borrows" items to enter/exhibit as their own will forfeit all claims as a participant for that year. Further, if a participant tries

to deceive the Committee more than once, he or she will be banned from entering any future Creative Arts and Crafts competitions.

15. Participants in the Western Art Show will not be allowed to enter pieces for the amateur competition in the Creative Arts and Crafts competition. We welcome participants in the Scholarship Program to enter pieces in the Creative Arts and Crafts competition.

**IMPORTANT NOTE:**

Personal and demographic information provided will not be used for the purposes other than those related to Calgary Stampede operated programs or business purposes. Your information will be handled with discretion and will not be sold, given away, or provided to parties outside the Calgary Stampede without your consent, unless the law requires that it be shared.

By entering, the participant agrees that pictures, images or representations of his/her entry may be used by the Calgary Stampede in promotional content created by the Calgary Stampede.

**WE THANK YOU FOR YOUR  
PARTICIPATION!**

## PARKING

To access free parking at the Calgary Stampede during Take-in or Pick-up, please use the parking coupon found at [www.westernshowcase.com](http://www.westernshowcase.com) using the Creative Arts and Crafts tab.

The parking lot is just outside the BMO Centre off of 12th Avenue SE for both Take-in and Pick-up.





CS

*Calgary Stampede*